



1 B11 Section A-A
1:200



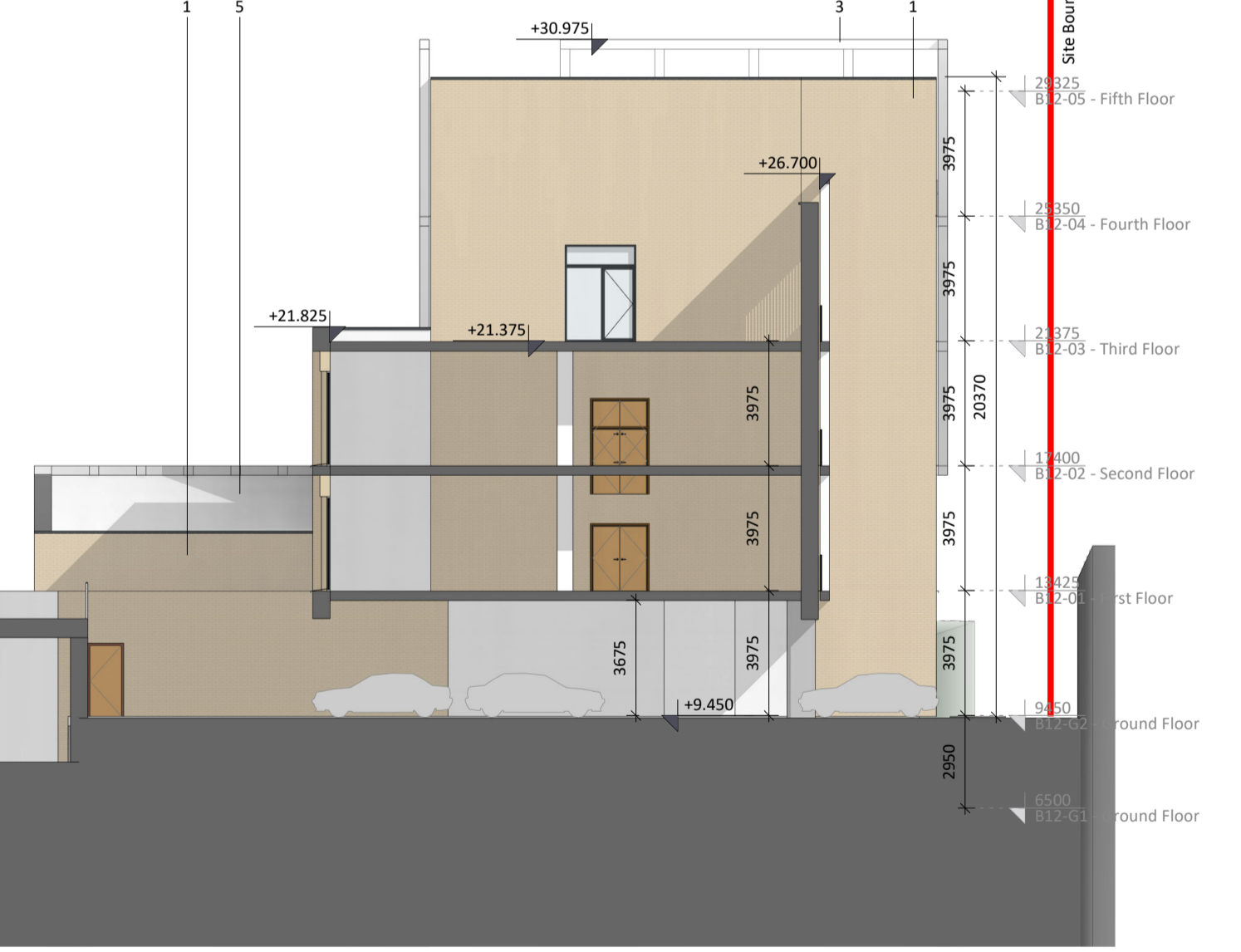
2 B11 Section B-B
1:200



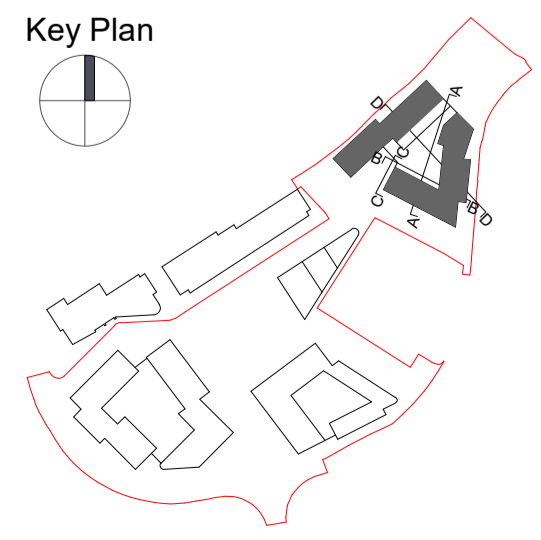
3 B11 Section C-C
1:200



4 B11 Section D-D
1:200



Block 11 and 12 Sections



Material Key

- 1 Selected brick finish
- 2 Selected render finish
- 3 Selected stone / reconstructed stone finish
- 4 Selected metal cladding
- 5 Selected metal roofing
- 6 Selected windows
- 7 Selected frameless curtain wall system
- 8 Selected metal louvers
- 9 Selected metal railing
- 10 Selected metal balcony
- 11 Selected glass balustrade
- 12 Selected winter garden system with metal frame
- 13 Selected metal frame
- 14 Selected PV Panels
- 15 Canopy

Revision Description	Date	Rev. No.	Issued by
SHD Application to An Bord Pleanála	10-06-2022	C01	CC/AN

omahony pike

architecture | urban design
 email: info@omahonypike.com
 tel: +353 1 202 7400
 fax: +353 1 283 0822
 www.omahonypike.com

Dublin
 The Chapel
 Mount St. Anne's
 Milltown, Dublin 6
 D06 XNS2 Ireland

Cork
 One South Mall
 Cork City
 Co. Cork
 T12 CCN3 Ireland

Project Code: 1730D
 Project Lead: SD
 Drawn By: Author
 Job No.: 1730D
 Purpose: Planning

Scale @ A1: 1:200
 Date: 10-06-2022
 Revision: C01
 Status: A3

Figured dimensions only to be used. This drawing is copyright of O'Mahony Pike Architects Ltd. All information is shared as per approved use in accordance with ISO19650-2:2018, Table 5; Standard Codes for Suitability of Models and Documents and the BEP. If the 'Status' field is empty, this information has been shared at 50 - WIP.

Project: Jacob's Island Strategic Housing Development
 Location: Jacobs Island, Mahon, Co.Cork
 Client: Hibernia Star Ltd.

Drawing Title: Block 11 and 12 Sections
 Drawing No.: 1730D-OMP-B11-ZZ-DR-A-3000

Source File: 1730D-OMP-ZZ-22-MS-A-0001.rvt